

**Knife gate valve with electric actuator
interflange**

PN2,5
PN6
PN10

SEWAGE



Knife gate valve DN150

Product description (standard execution):

- Bidirectional tightness
- Knife circumferential seal profile with steel insert
- Knife cleaning scrapers
- Ductile cast iron monolithic body EN-GJS 400-15
- Stainless steel 1.4021 spindle with rolled thread
- Low friction spindle bearing by plastic and brass plain washers
- Gland sealing – o-ring NBR and non-asbestos cord
- Spindle nut made of bronze
- Epoxy coating minimum 250 microns according to EN ISO 12944-5
- Stainless steel bolts and washers
- Product according to EN 1074-1 and 2; EN 1171
- Flange connection according to EN 1092-2 (DIN 2501) pressure PS2,5; PS6; PS10
- ISO top flange 5211
- Face to face according to producer documentation JAFAR
- Product marking according to EN 19; EN 1074

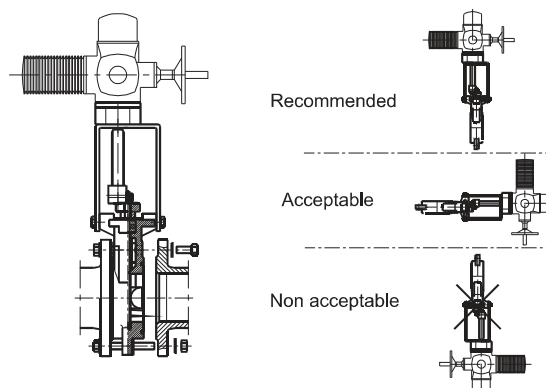
Application:

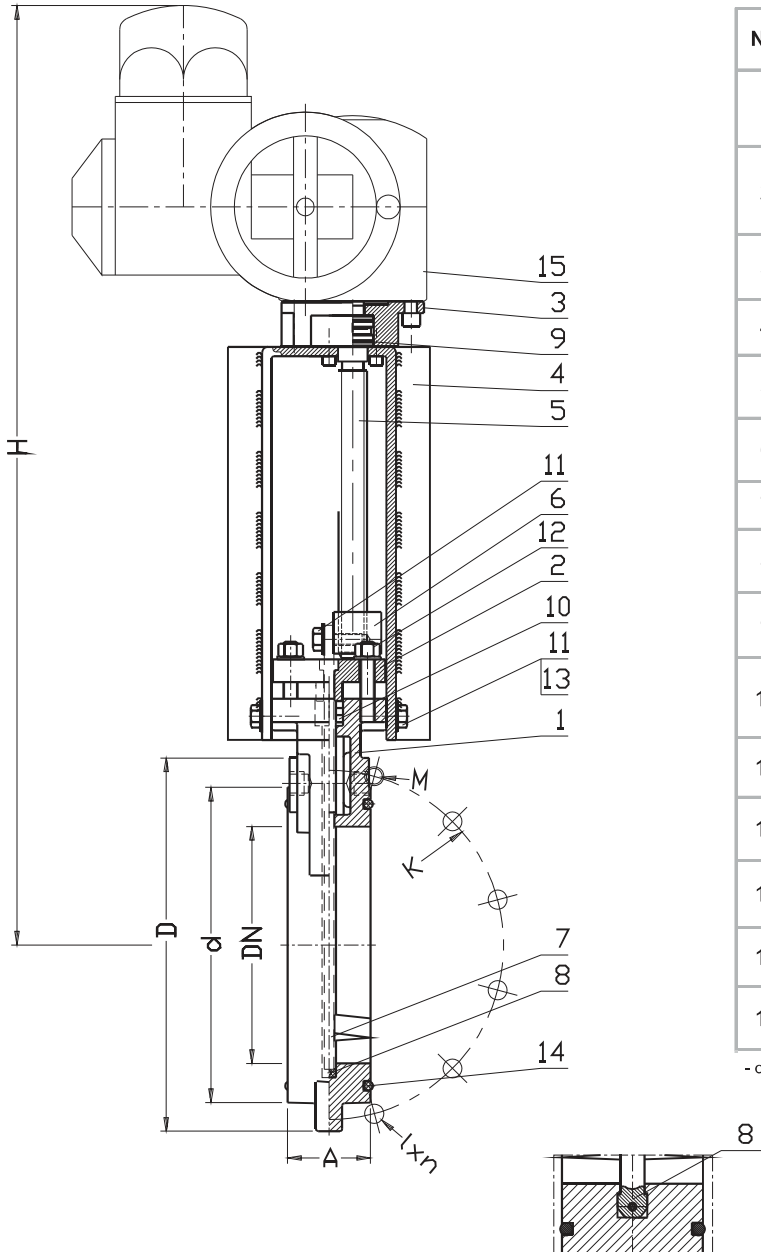
Water and sewage networks and tanks; pulverized products, transport of non aggressive liquids.
Working conditions:
temp. up +70°C
pressure up to 1,0 MPa

Test control:

Hydraulic test according to EN 1074-1; EN 1074-2; EN 12266-1
Seat: 1,1 xPN
Body: 1,5 x PN
Operation torque test.

Installation:





No.	Part	Standard execution
1	Body	Ductil cast iron EN-GJS-400-15 EN 1563
2	Clamping plate	Ductil cast iron EN-GJS-400-15 EN 1563
3	Engine base	Steel 1.0038 EN 10025-2
4	Pillar	Steel 1.0038 EN 10025-2
5	Spindle	Stainless steel 1.4021 EN 10088-1
6	Spindle nut	Bronze EN 1982
7	Knife	Stainless steel 1.4301 EN 10088-1
8	Gasket	Rubber NBR EN ISO 1629:
9	Bushing	Producer catalogue
10	Gland seal	PACKAGE: Rubber NBR, EN- SO 1629 with non- asbestos cord
11	Screw	Stainless steel A2 EN ISO 4014
12	Nut	Stainless steel A4 EN ISO 4032
13	Washer	Stainless steel A2 EN ISO 7091
14	Seal o-ring	Rubber NBR EN ISO 1629
15	Electric actuator	Producer catalogue

- other material variants on special request

Standard: DN50 to DN500 - non-rising or rising spindle
DN600 to DN1000 - rising spindle

DN	PN	PS	K	D	d	l x n	M x n	A		H	Actuator	Flange connections	Weight		
								by drawing	row 20						
[mm]	[bar]														
40	10 16	10	110	150	84	-	M16x4	48	-	-	SA 07.2	F7/F10	23		
50			125	165	99	-			-	551			25		
65			145	185	118	-			-	582			29		
80			160	200	132	Ø19x6	M16x2	52	-	598	SA 07.6	F10	30		
100			180	220	156	Ø19x6			52	632			32		
125			210	250	184	Ø19x6	M20x2	56	56	684	SA 10.2	F10	38		
150			240	285	212	Ø23x6			740	41					
200			10	6	295	340	266	Ø23x6	M20x4	70	-	830	SA 10.2	F10	58
250					350	395	319	Ø23x8			-	930			72
300					400	445	370	Ø23x8	M20x6	76	-	1100	SA 14.2	F14	86
350	460	505			430	Ø23x10	-	1180			106				
400	515	565			480	Ø28x10	M24x6	86	-	1286	SA 14.6	F14	146		
500	620	670			582	Ø28x12	M24x8		-	1520			282		
600	10	2.5			725	780	682	Ø31x12	M27x8	114	-	1725	SA 16.2	F16	332
700					840	895	794	Ø31x14	M27x10		-	165			2018
800					950	1015	901	Ø34x14	M30x10	-	190	2210	763		
900					1050	1115	1001	Ø34x16	M30x12	-	203	2466	933		
1000			1160	1230	1112	Ø37x16	M33x12	-	216	2608	1233				

We reserve the rights to modify the production program and the given data without separate notices due to the permanent company development.