

Resilient seated gate valve
BS5163
flanged

PN10
PN16

SEWAGE

WATER



Gate valve 2112 DN65



Packing cork protected against unscrewing and fully covered by additional cleaning gasket



Horizontal and vertical double spindle bearing



Replaceable wedge nut

Application of low friction sliding element

Product description (standard execution):

- Body bonnet and wedge made of ductile cast iron EN-GJS 400-15
- Full bore gate valve
- NBR/EPDM fully vulcanised wedge
- Wedge nut made of forged brass - replaceable
- Application of low friction sliding element
- Stainless steel spindle with rolled thread
- Low friction double spindle bearing acting both horizontal and vertical way
- O-ring spindle sealing packing cork protected against contact with medium
- Under pressure replaceable packing cork
- Forged packing cork protected against unscrewing
- Packing cork protected against dirt penetration
- Body bonnet Zinc coated screws protected by wax
- Epoxy coating minimum 250 microns according to EN ISO 12944-5
- Product according to EN 1074-1 and 2:2002 EN 1171
- Flange connection according to EN 1092-2 (DIN 2501) pressure PN10; PN16
- Face to face according to BS 5163-1
- Product marking according to EN 19; EN 1074

Application:

Water and sewage networks and tanks. Transport of non aggressive liquids.
Working conditions:
temp. up +70°C
pressure up to 1,6 MPa

Execution variant:

Ductile cast iron EN-GJS 500-7
SS body and bonnet screws
With ISO top flange for actuator
With electric or pneumatic actuator - see.: 2901, 2902, 2903, 2911
With inductive or electromechanical sensor
With opening indicator
Other material variants on request!

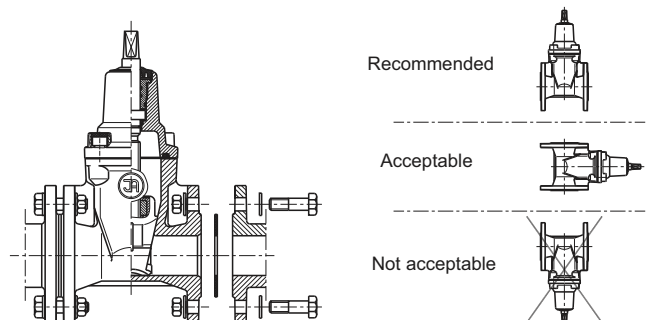
Test control:

Hydraulic test according to EN 1074-1; EN 1074-2; EN 12266-1
Seat: 1,1 xPN
Body: 1,5 x PN
Operation torque test.

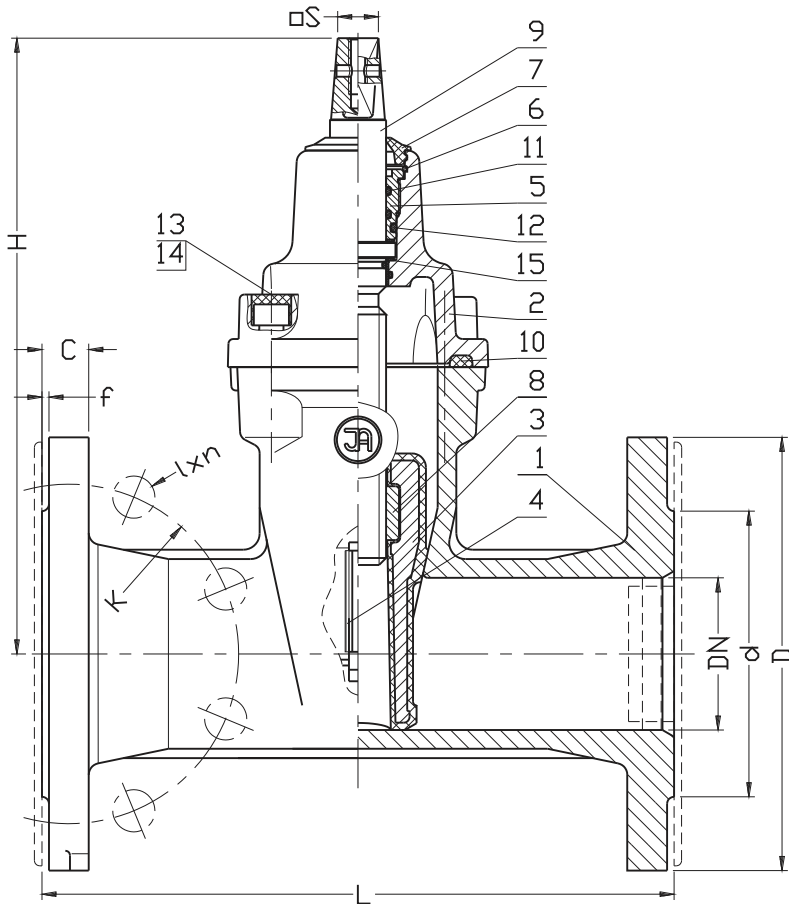
Accessories:

Extension spindle - see: 9010, 9011
Pillar with handwheel - see: 9113
Pillar for electric actuator - see: 9114
Handwheel - see: 9301
Street box - see: 9501, 9509

Installation:



Bearing for DN40 - 300



No.	Part	Standar execution
1	Body	Ductile cast iron EN-GJS-400-15 or EN-GJS-500-7 EN 1563
2	Bonnet	Ductile cast iron EN-GJS-400-15 or EN-GJS-500-7 EN 1563
3	Wedge	Ductile cast iron (DN40-DN300) EN-GJS-400-15 or EN-GJS-500-7 EN 1563 Rubber EPDM: acc. to EN ISO 1629
4	Wedge slider	Polyamide EN-ISO 1874-1
5	Packing cork	Brass EN 1982
6	Protection ring	Steel 1.1260
7	Cleaning gasket	Rubber EPDM or NBR EN ISO 1629
8	Spindle nut	Brass EN 1982
9	Spindle	Stainless Steel 1.4021 EN 10088-1
10	Body-bonnet gasket	Rubber EPDM or NBR EN ISO 1629
11 12	O-ring	Rubber EPDM or NBR EN ISO 1629
13	Screw	Steel Fe/Zn5, stainless steel Acc. to EN ISO 4762
14	Screw stopper	Wax
15	Washer	Polyamide PA6 EN ISO 1874-1

- other material variants on special request

DN	L	H	d	D	K PN16 (PN10)	I PN16 (PN10)	C	f	n PN16 (PN10)	S	Turn for full open	Weight
[mm]										-	[mm]	[kg]
40	165	220	84	150	110	19	16	3	4	14	11	8,5
50	178	230	99	165	125	19	19	3	4	14	13,5	10,5
65	190	265	118	185	145	19	19	3	4	17	14	15,0
80	203	290	132	200	160	19	19	3	8	17	17	19,5
100	229	325	156	220	180	19	19	3	8	19	21	26,0
125	254	365	184	250	210	19	19	3	8	19	26	33,5
150	267	457	211	285	240	23	20	3	8	19	26	48,2
200	292	534	266	340	295	23	22	3	12 (8)	24	34,5	73,3
250	330	633	319	405	355 (350)	28 (23)	25	3	12	27	42,5	97,0
300	356	708	370	460	410 (400)	28 (23)	27	4	12	27	51	134,5

We reserve the rights to modify the production program and the given data without separate notices due to the permanent company development.