

**Resilient seated gate valve**  
for PE pipes

PN10  
PN16

**WATER**



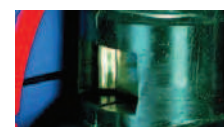
Gate valve DN80



Packing cork protected against unscrewing and fully covered by additional cleaning gasket



Horizontal and vertical double spindle bearing



Replaceable wedge nut



Application of low friction sliding element

### Product description (standard execution):

- Buffer zone and flexible tube positioning
- PE tube clamping ring protection against slipping
- Max. axis deviation  $\pm 4^*$
- Body bonnet and wedge made of ductile cast iron EN-GJS 400-15
- Full bore gate valve
- NBR/EPDM fully vulcanised wedge
- Application of low friction sliding element
- Wedge nut made of forged brass - replaceable
- Stainless steel spindle with rolled thread
- Low friction double spindle bearing acting both horizontal and vertical way
- O-ring spindle sealing packing cork protected against contact with medium
- Under pressure replaceable packing cork
- Forged packing cork protected against unscrewing
- Packing cork protected against dirt penetration
- Body bonnet Zinc coated screws protected by wax
- Epoxy coating minimum 250 microns according to EN ISO 12944-5
- Product according to EN 1074-1 and 2; EN 1171
- Face to face according to producer documentation JAFAR
- Product marking according to EN 19; EN 1074

### Application:

Water networks and tanks. Transport of non aggressive liquids.  
Working conditions:  
temp. up +40°C  
pressure up to 1,6 MPa

### Execution variant:

Ductile cast iron EN-GJS 500-7  
SS body and bonnet screws  
With ISO top flange for actuator  
With electric or pneumatic actuator  
With inductive or electromechanical sensor  
With opening indicator  
Other material variants on request!

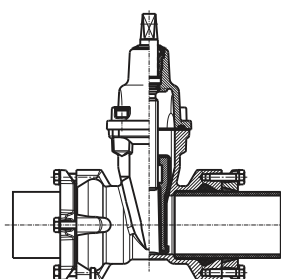
### Test control:

Hydraulic test according to EN 1074-1; EN 1074-2; EN 12266-1  
Seat: 1,1 xPN  
Body: 1,5 x PN  
Operation torque test.

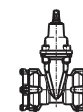
### Accessories:

Extension spindle - see: 9010, 9011  
Pillar with handwheel - see: 9113  
Pillar for electric actuator - see: 9114  
Handwheel - see: 9301  
Street box - see: 9501, 9509

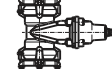
### Installation:



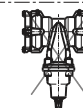
Recommended

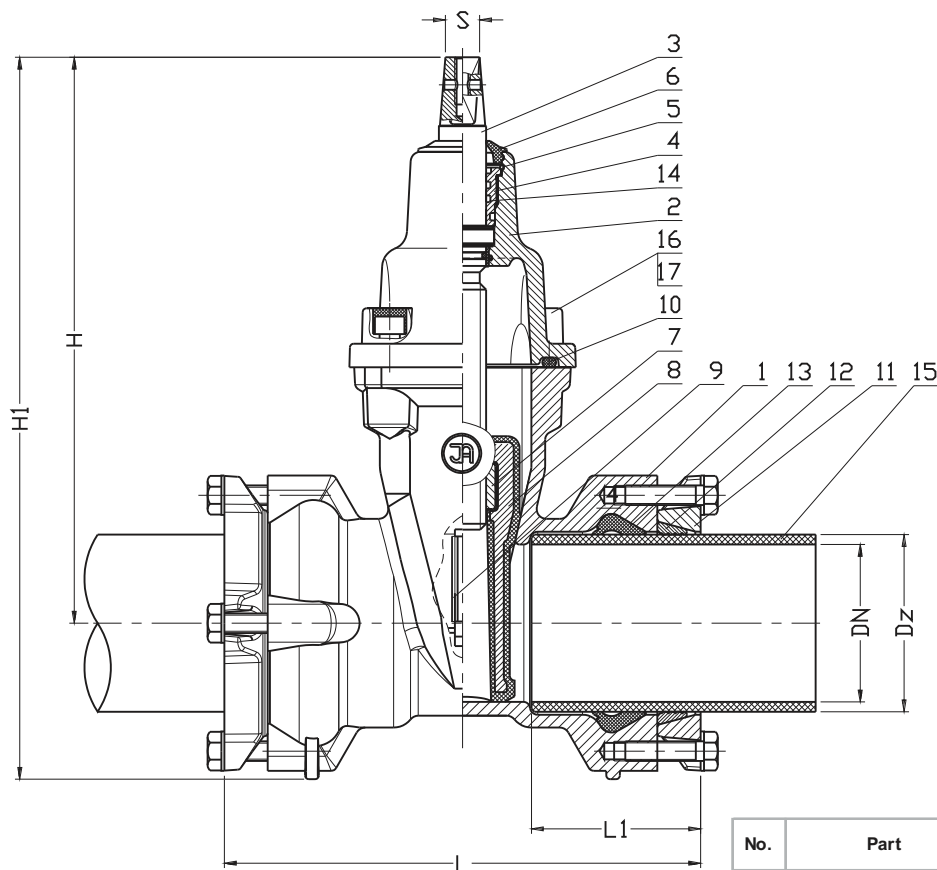


Acceptable



Not acceptable





No.	Part	Standard execution
1	Body	Ductile cast iron EN-GJS-400-15 EN 1563
2	Bonnet	Ductile cast iron EN-GJS-400-15 EN 1563
3	Spindle	Stainless steel 1.4021 EN 10088-1
4	Packing cork	Brass EN 1982
5	Protection ring	Steel 1.1260
6	Cleaning gasket	Rubber EPDM or NBR EN ISO 1629
7	Spindle nut	Brass EN 1982
8	Wedge	Ductile cast iron (DN50-DN300) EN-GJS-400-15 EN 1563 Rubber EPDM or NBR: EN ISO 1629
9	Wedge slider	Polyamide EN ISO 1874-1
10	Body-bonnet gasket	Rubber EPDM or NBR EN ISO 1629
11	Forked flange	Ductile cast iron EN-GJS-500-7 EN 1563
12	Ring	Brass EN 1982
13	FORSHEd ring	Rubber EPDM or NBR EN ISO 1629
14	O-ring	Rubber EPDM or NBR EN ISO 1629
15	PE pipe	SDR11 EN 1555-2
16	Screw	Stal Fe/Zn5, stal nierdzewna EN ISO 4762
17	Screw stopper	Wax

DN	Dz	H	H1	L	L1	S	Weight
[mm]							[kg]
50	63	230	295	226	82	14	5
65	75	265	335	240	85	17	11
80	90	290	367	242	86	17	15
100	110	325	412	252	86	19	19
100	125	325	412	260	86	19	21
125*	125	365	458	280	90	19	29
150	160	457	575	326	90	19	38
200	200	534	674	366	128	24	56
200	225	534	674	366	128	24	58
250*	280	633	812	420	147	27	97
300	315	708	908	472	176	27	135

\* - implementation

- other material variants on special request

We reserve the rights to modify the production program and the given data without separate notices due to the permanent company development.