

**Tapping saddle**  
for PE and PVC pipes

PN10  
PN16

**WATER**



Tapping saddle DN50

**Product description (standard execution):**

- Body bonnet and wedge made of ductile cast iron EN-GJS 400-15
- Head protected against unscrewing
- Drill diameter 38 mm
- Elongated drilling knife made of stainless steel
- O-ring spindle sealing, packing cork protected against contact with medium
- Connection diameter 5/4" or 2"
- External diameter of PE and PVC pipes: 63, 90, 110, 125, 140, 160, 200, 225,
- EPDM fully covered clamp
- Body-clamp stainless steel screws
- Clean gasket protecting packing cork against dirt penetration from outside
- Epoxy coating minimum 250 microns according to EN ISO 12944-5
- Article according to EN 1074-1 and 2
- Face to face according to producer documentation JAFAR
- Product marking according to: EN 19, EN 1074

**Application:**

Water and sewage networks and tanks. Transport of non aggressive liquids.  
Working conditions:  
temp. up +70°C  
pressure up to 1,6 MPa

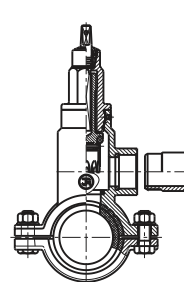
**Execution variant:**

Ductile cast iron EN-GJS 500-7

**Test control:**

Water pressure test according to EN 1074-1; EN 1074- 2; EN 12266-1  
Seat 1,1 x PN  
Body 1,5 x PN  
Operation torque test

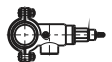
**Installation:**



Recommended



Acceptable

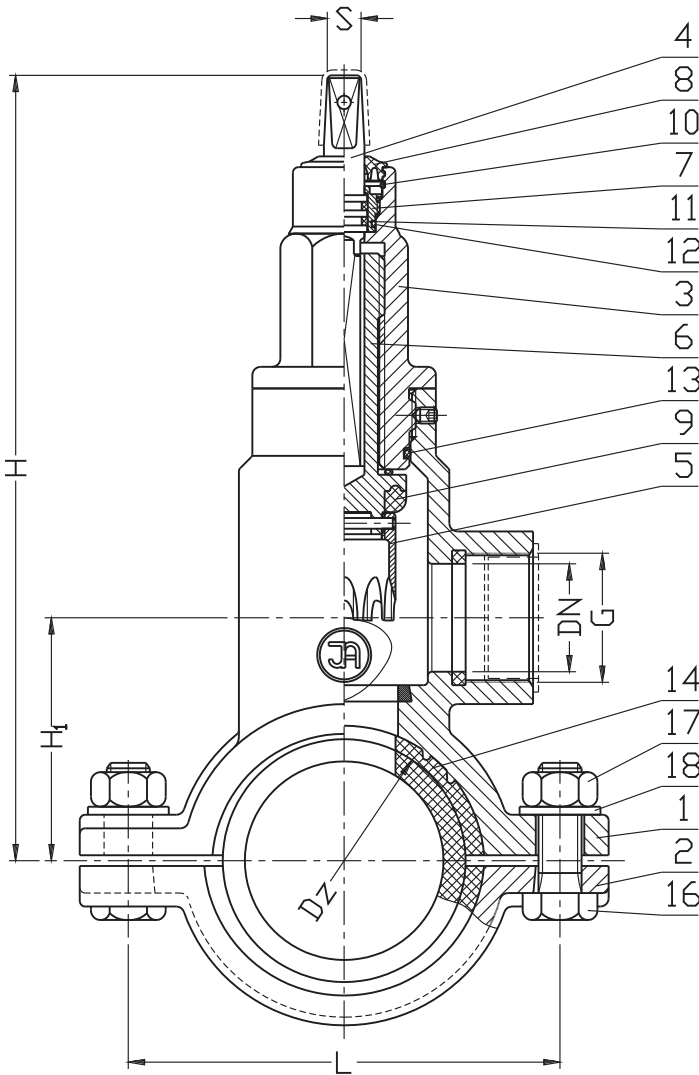


Non acceptable



**Accessories:**

Extension spindle - see: 9010, 9011  
Street box - see: 9501, 9503, 9504, 909



No.	Part	Standard execution
1	Body	Ductile cast iron EN-GJS-400-15 EN 1563
2	Clamp	Ductile cast iron EN-GJS-400-15 EN 1563
3	Cap	Ductile cast iron EN-GJS-400-15 EN 1563
4	Spindle	Stainless steel 1.4021 EN 10088-1
5	Knife	Stainless steel 1.4541 EN 10088-1
6	Coupler	Brass EN 1982
7	Packing cork	Brass EN 1982
8	Cleaning gasket	Rubber EPDM NBR EN ISO 1629
9	Gasket	Rubber EPDM NBR EN ISO 1629
10	Protection ring	Steel 1.1260
11-13	O-ring	Rubber EPDM NBR EN ISO 1629
14	Pipe gasket	Rubber EPDM NBR EN ISO 1629
15	Pipe gasket	Rubber EPDM NBR EN ISO 1629
16	Screw	Stainless steel A2 EN ISO 4017
17	Nut	Stainless steel A4 EN ISO 4032
18	Washer	Stainless steel A2 EN ISO 7091

- other material variants on special request

DN	G	Dz	H <sub>1</sub>	H	L	S	Weight
[mm]	[cal]	[mm]					[kg]
32	5/4"	63	77	280	132	12	6,4
		90	90	293	160		7,9
		110	100	303	180		8,2
		125	112	315	200		8,5
		140	116	320	205		8,7
		160	126	330	225		10,2
		200	145	348	274		12,5
50	2"	63	77	280	132	12	6,8
		90	90	293	160		7,9
		110	100	303	180		8,3
		125	112	315	200		8,8
		140	116	320	205		9,3
		160	126	330	225		10,1
		200	145	348	274		12,5
		225	158	360	300	13,3	

We reserve the rights to modify the production program and the given data without separate notices due to the permanent company development.